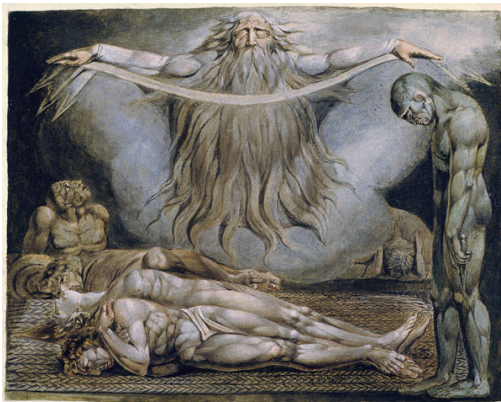


RELI 421: Religion and Science

Religious and scientific worldviews have always been deeply entangled, and continue to interact in often perplexing ways, especially in contemporary political discourse. I hope that this course is able to shine some light on the complexity and richness of those interactions, especially as they have developed in the Christian West. To accomplish that task, we will endeavor to examine the historical relationship between a dominant strain of religious, scientific, and philosophical thinking as it has developed in the North Atlantic world, from its ancient Greco-Christian (and more unified) roots through the Medieval Period, the Scientific Revolution, the 19th century professionalization of science, and more modern theories in physics and ecology. By focusing on the themes of cosmology, the origins of life and human nature, and the development of ecological thinking, we will unpack the many ways that contemporary debates about the roles of religion and science in our modern lives are informed by and embroiled in enduring historical debates and modes of understanding, and how the lingering hopes of these historically religious modes of thinking come to animate and inspire modern scientific endeavors.



Instructor Nathan Schradle

schradle@live.unc.edu

Tuesday/Thursday
3:30PM-4:45PM

**General Education
Requirements: Fulfills**

PH

