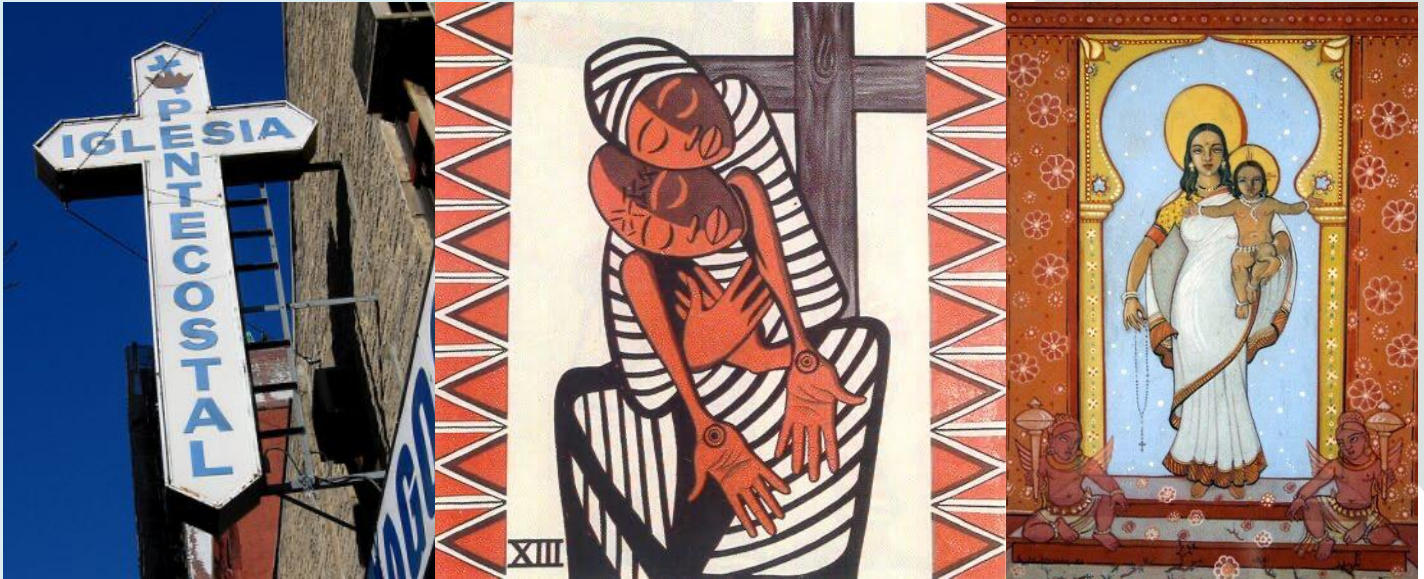


# RELI 167

## Global Christianity



Historians of Christianity now tell the story of Christianity as originating in Asia/the Middle East, developing theologically in Africa, and only then becoming central to Europe in the Middle Ages. In the early modern world and the 20th century, imperialism in the Americas, Africa, and Asia led to further dramatic shifts. This course assesses how local circumstances across the globe impacted a “universal” religion.

Students engage with primary source documents and case studies of regional developments, supplemented by liturgy conducted online during the age of Covid-19. Particular attention will be paid to politics, local culture, inter-religious interactions, and the impact of women and laity on the life of the church in Catholicism, various forms of Protestantism, and Eastern Orthodoxy.

Jes Boon

[jboon@email.unc.edu](mailto:jboon@email.unc.edu)

Weekdays

1:15PM-4:30PM

In-Person/Remote

GENERAL EDUCATION REQUIREMENTS: GL, HS

